

Lifecycle Manager and Upgrade Manager for SAP BusinessObjects 4.0

September 23, 2011

Brian Wrona, Senior Solution Engineer

This presentation outlines our general product direction and should not be relied on in making a purchase decision. This presentation is not subject to your license agreement or any other agreement with SAP. SAP has no obligation to pursue any course of business outlined in this presentation or to develop or release any functionality mentioned in this presentation. This presentation and SAP's strategy and possible future developments are subject to change and may be changed by SAP at any time for any reason without notice. This document is provided without a warranty of any kind, either express or implied, including but not limited to, the implied warranties of merchantability, fitness for a particular purpose, or non-infringement. SAP assumes no responsibility for errors or omissions in this document and shall have no liability for damages of any kind that may result from the use of these materials, except if such damages were caused by SAP intentionally or grossly negligent.

4.0 Availability



- On, **September 16th**, we announced the general availability of **SAP® BusinessObjects™ Business Intelligence 4.0** and **SAP® BusinessObjects™ Enterprise Information Management 4.0**. This includes the latest versions for Web Intelligence, Dashboards, Crystal Reports, Explorer, the Business Intelligence Platform, Edge BI and Information Steward.

- Version 4.0 SP2 Fixpack 5

1. Basic Concepts

2. What's new LCM?
3. Overrides
4. Visual Difference
5. Command Line Tool
6. CTS+ integration
7. Services
8. LCM logs
9. What's even newer?

1. Basic Concepts

2. What's new LCM?
3. Overrides
4. Visual Difference
5. Command Line Tool
6. CTS+ integration
7. Services
8. LCM logs
9. What's even newer?

What is the right tool?

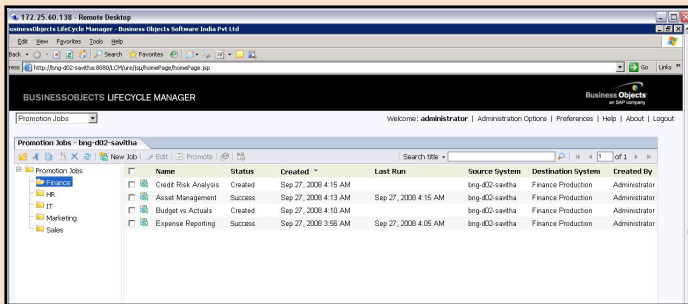


Promotion

LifeCycle Management Console (LCM)

Promotion: “Transport content from like system to like system”

Systems are the same version E.g. Dev to Test to Production. Content is primarily document templates, metadata and schedules. Not document instances.

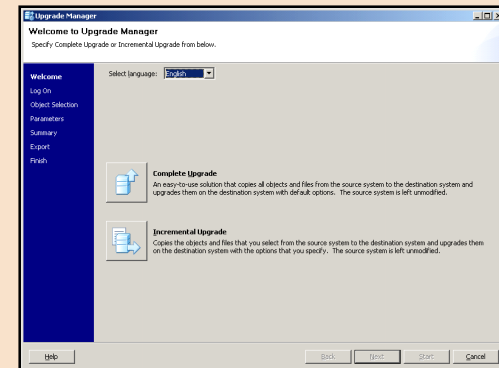


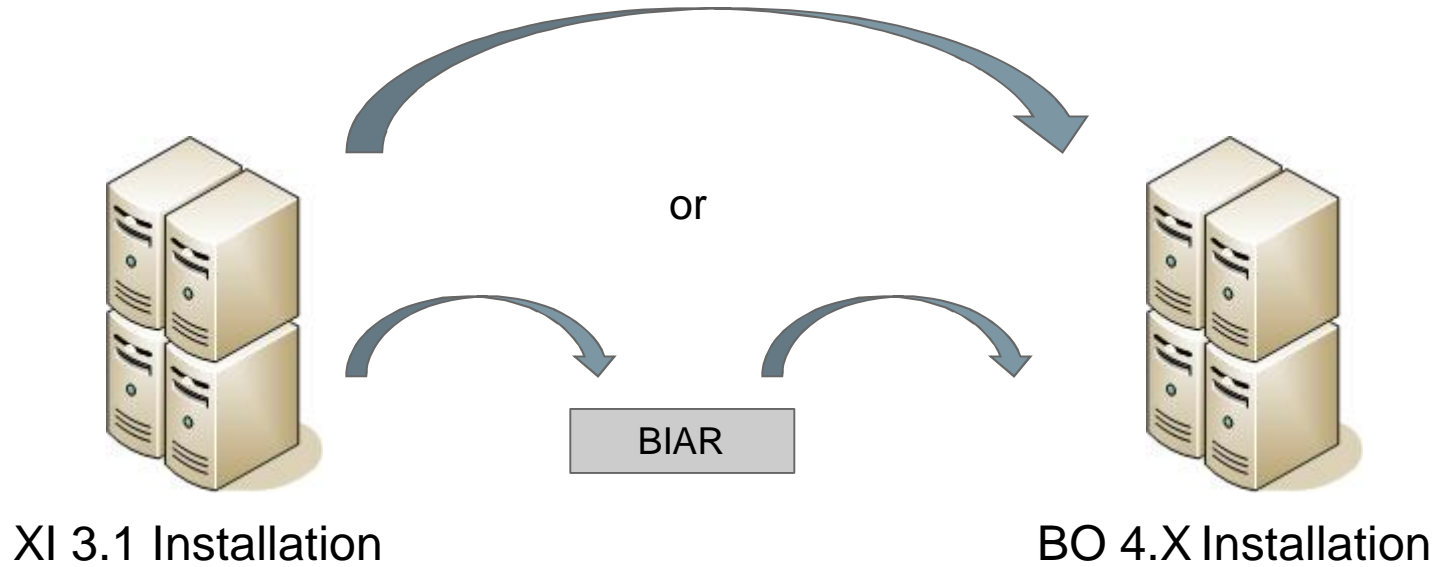
Upgrade / Migration

Upgrade Manager

Upgrade: “Transport and transform content from previous version to newer version”
Content includes all objects.

Migrate: “Transport and transform content from a previous platform to a new platform or architecture”



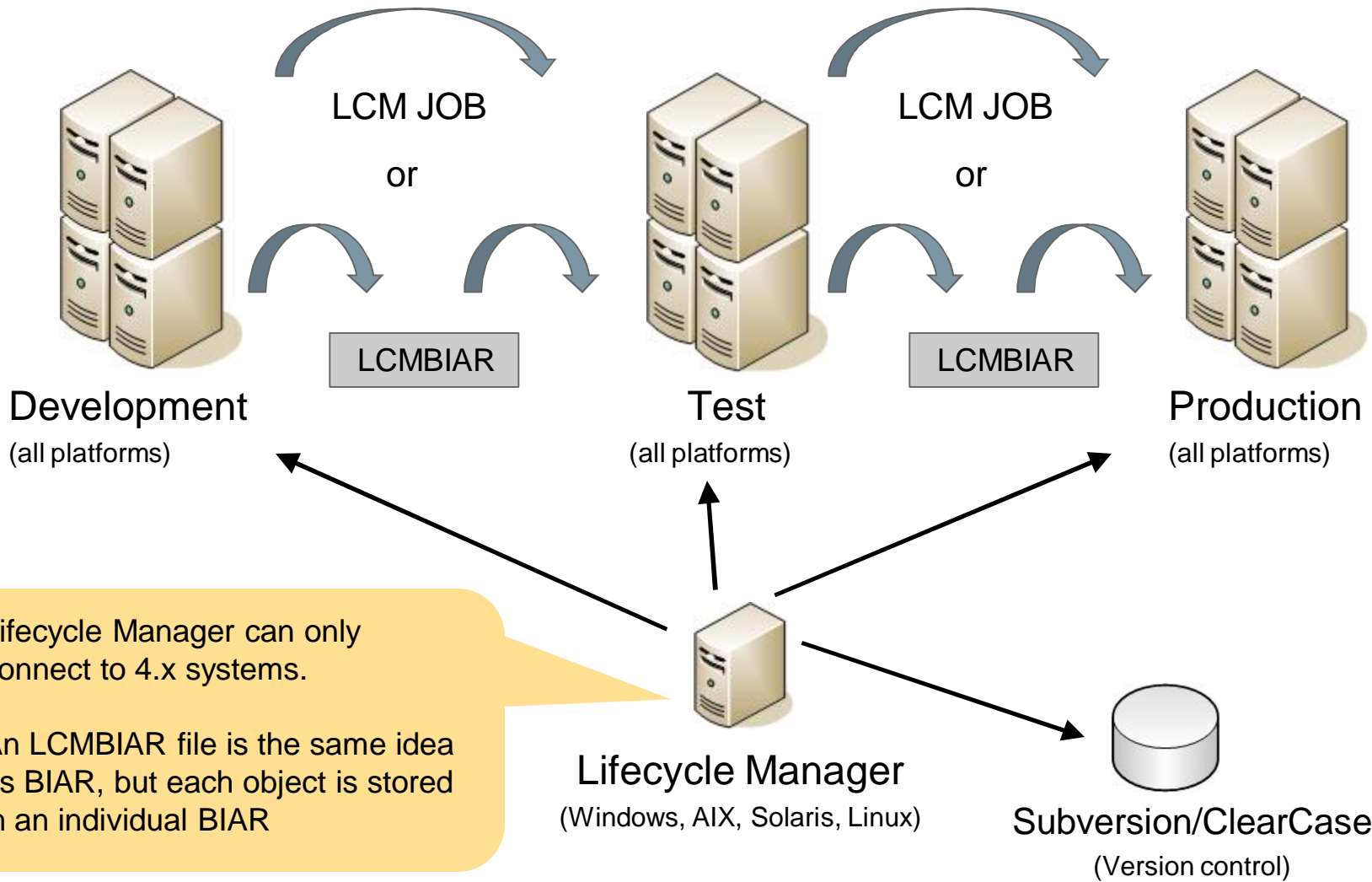


Cannot connect to 4.x system as a source. Only XI 3.x, XI R2 SP2 (or higher) or BIAR file.

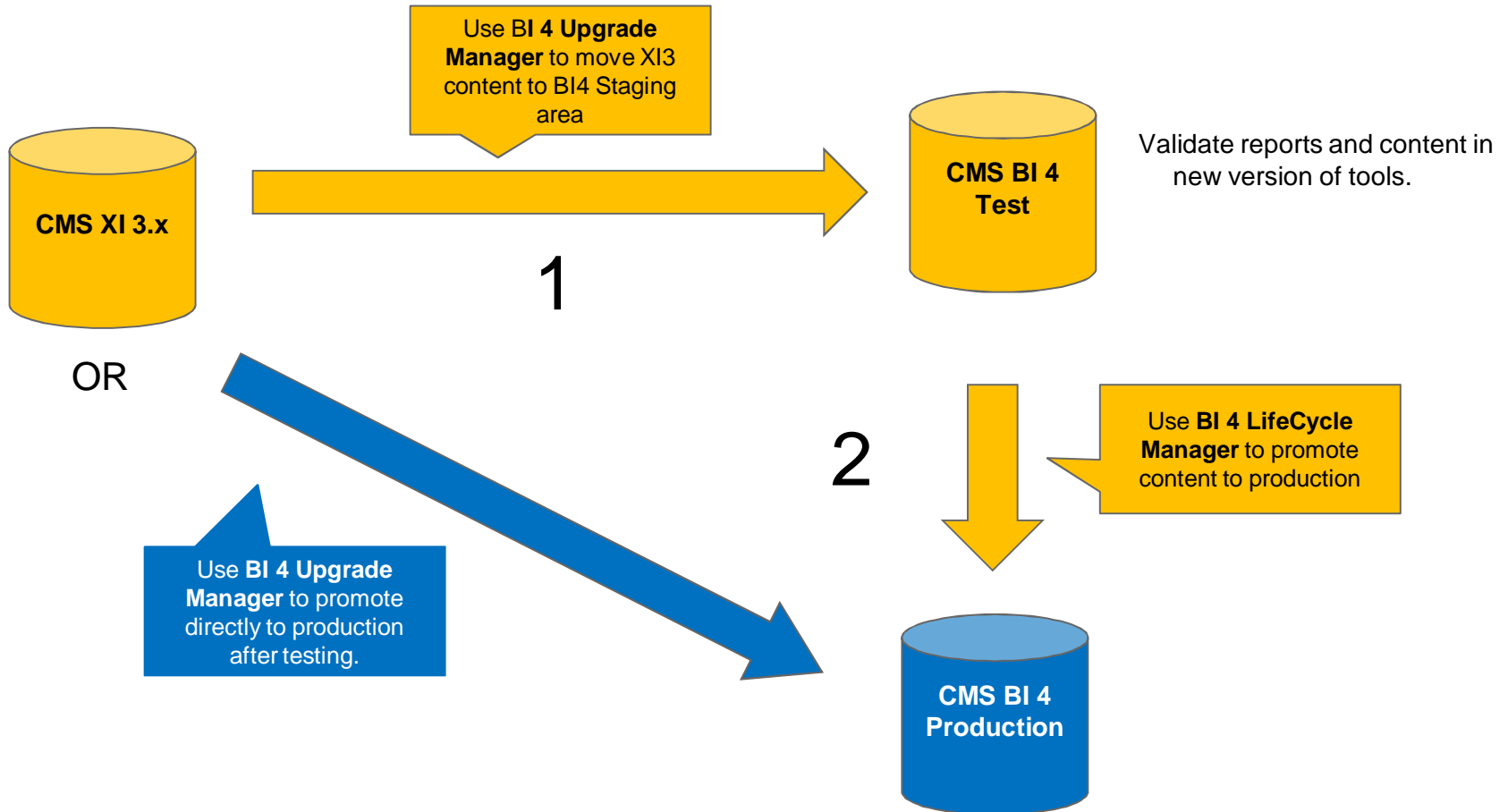
BIAR:(BI Archive) is a collection of any binaries associated with a BI object and its associated metadata, all materialized in a zip file.

Upgrade Manager





Upgrade from XI3 to BI4



1. Basic Concepts
- 2. What's new LCM?**
3. Overrides
4. Visual Difference
5. Command Line Tool
6. CTS+ integration
7. LCM Services
8. LCM logs
9. What's even newer?

Installation

- Lifecycle management console is now included in SAP BusinessObjects Business Intelligence servers install package.

New Visual Difference capabilities allow easy identification of changes.

Scriptable promotions supported via a command line interface.

Lifecycle management is now in CMC:

- Central Management Console– Visual Difference, Promotion and Version Mgmt.

New Objects supported

Categories based promotion is now supported.

Server group promotion is supported however the servers are not promoted.

LCM is now localized.

Update Source system of job when

- Job is copied
- Job is migrated

Overrides no longer job specific

Supports new improved BI platform Audit infrastructure

There are 2 new features specifically for integrated deployments with BW:

- SAP Authentication is now supported.
- Integration with the SAP standard change transport system (CTS)

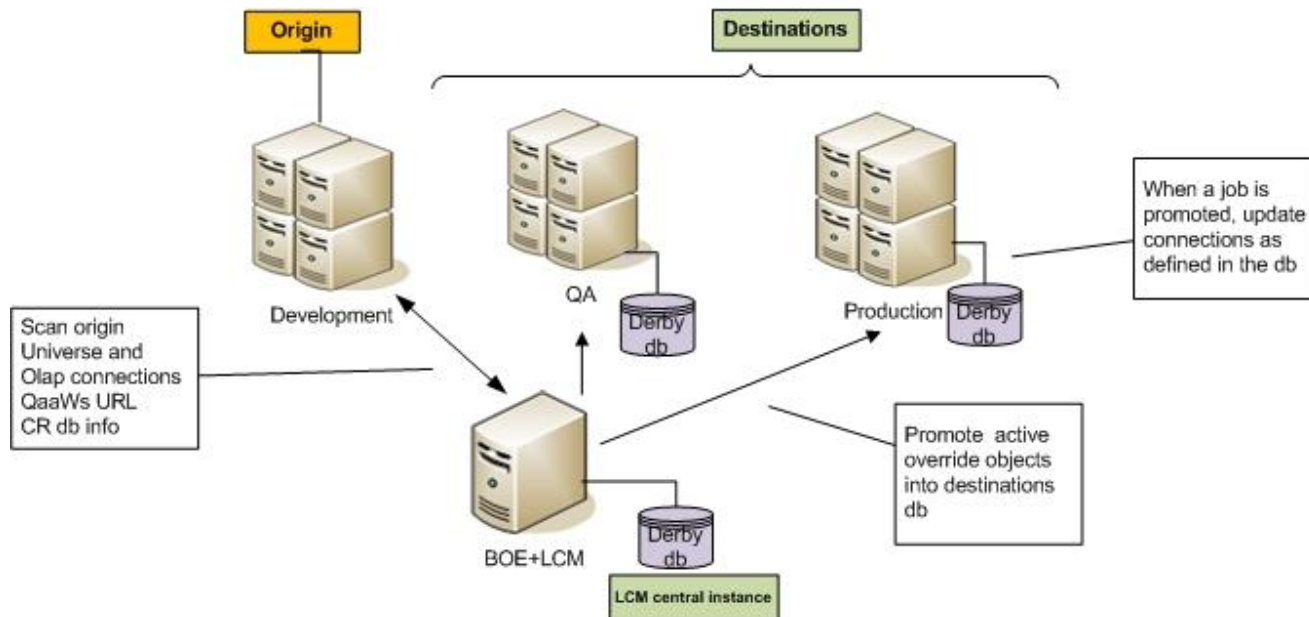
1. Basic Concepts
2. What's new LCM?
- 3. Overrides**
4. Visual Difference
5. Command Line Tool
6. CTS+ integration
7. LCM Services
8. LCM logs
9. What's even newer?

- Updating database connections (overrides) in XI 3.1 are job specific, in BI 4.0 are global.
 - In 4.0, Lifecycle management scans for all Crystal Reports, OLAP and Universe Connections and QaaWS URLs in the origin system.
 - Scan information can be updated with values for destination.
 - When a report connection is promoted, database connection information is automatically promoted.
 - Overrides can be from one or many origins to one or many destinations.

Overrides – How to configure overrides?

1. Specify Origin system (**Administration Options > Manage Systems**)
2. Scan the Origin system (**Administration Options > Override Settings**)
3. Mark desired objects as active.
4. Promote the overrides to one or multiple destinations.
5. In destination, mark desired objects as active and edit database connections.

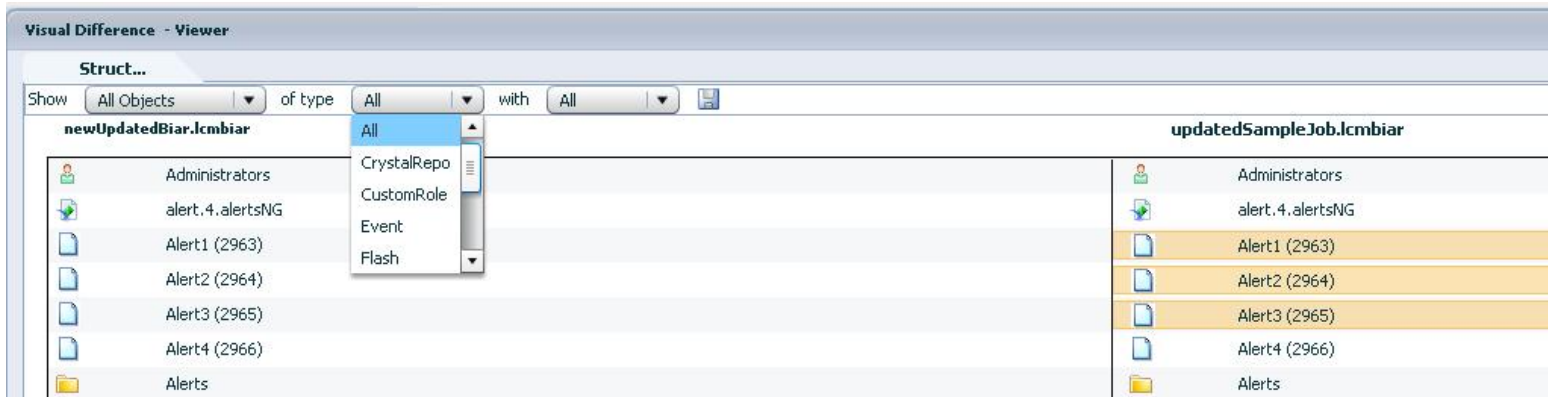
When a promotion job is executed, overrides of objects in the job are applied automatically.



1. Basic Concepts
2. What's new LCM?
3. Overrides
- 4. Visual Difference**
5. Command Line Tool
6. CTS+ integration
7. LCM Services
8. LCM logs
9. What's even newer?

- Visual Difference framework allows you to easily identify changes.
 - It provides comparison plug-in and viewers for BI content
 - In SAP BusinessObjects BI 4.0 only LCM Jobs and LCMBIAR comparisons are possible.
 - LCMBIAR to LCMBIAR
 - LCM Job to LCMBIAR
 - LCM Job to LCM Job
- LCMBIAR comparison includes:
 - Metadata
 - Primary Objects.
 - Dependent Objects.
- The differences process results in 3 types of differences
 - Removed
 - Modified
 - Inserted

- Visual Difference framework allows easy identification of changes
 - Comparison plug ins and viewers for each BI content type. (Eventually...)
 - LCMBIAR viewer answers: *“How is this version of the BI application different from a previous version?”*
 - Future service packs will provide comparison viewers for universes and other content types
 - For example, will answer: *“What is different between these two versions of a universe? Can I easily merge changes?”*
- Impact Analysis
 - Understanding which objects in a universe have changed allows tester to focus only on reports which use changed objects



1. Basic Concepts
2. What's new LCM?
3. Overrides
4. Visual Difference
- 5. Command Line Tool**
6. CTS+ integration
7. Services
8. LCM logs
9. What's even newer?

LCMBIAR file packages BI Applications:

- Promote content between Development, Test, and Production SAP BusinessObjects BI 4.0 environments.
- Allows you to use scripting to automate the import of objects.

BIAR and LCMBIAR:

- BIAR:(BI Archive) is a collection of any binaries associated with a BI object and its associated metadata, all materialized in a zip file.
- An LCMBIAR file is the same idea, but each object is stored in an individual BIAR.

Considerations:

- Lifecycle management tool is to promote objects from BI platform 4.x to BI platform 4.X version only.
- Upgrades must be done using the Upgrade management tool.
- To rollback a job you need to use the UI, not command line
- LCM Command Line tool is not used when CTS+ is available.

LCM Command Line Tool

What can you do?



Export an existing Lifecycle Management job:

- Report developer creates LCM Job with content to promote
- LCM Administrator uses Command Line Tool (CLI) to create LCMBIAR

Promote existing job:

- Report developer creates LCM job with content to promote
- LCM Administrator uses CLI to promote LCM job content to destination

Promote an existing LCMBIAR file:

- LCM Administrator uses CLI to promote LCMBIAR content to destination

Export single or multiple platform queries:

- LCM Administrator or developer writes one or more queries to specify the content selection and LCMBIAR file is created.

Promote multiple platform queries:

- LCM Administrator or developer writes multiple queries to specify content selection, the BOE content selected by the queries is promoted to the destination

LCM Command Line Tool

How to use?



- Prerequisites:
 - Set the java path if using lcm.jar
 - Parameters are specified in a properties file.
 - Properties file name should be: <FileName>.properties.
 - Example: Myparameters.properties
- LCM Command Line tool can be launched via BAT file or JAR file:
 - lcm_cli.bat
 - lcm_cli.bat -lcmproperty <property file>
 - Example: c:\Program Files(x86)\SAP Business Objects\SAP BusinessObjects Enterprise XI4.0\win64_x64\scripts\lcm_cli.bat -lcmproperty Myparameters.properties
 - lcm.jar
 - java -cp "lcm.jar" com.businessobjects.lcm.cli.LCMCLI <property file>
 - Example: c:\Program Files(x86)\SAP Business Objects\SAP BusinessObjects Enterprise XI4.0\win64_x64\java\lib\ java -cp "lcm.jar" com.businessobjkects.lcm.cli.LCMCLI Myparameters.properties

LCM Command Line Tool Properties File example



Promote:

```
#this file imports a l cmbiar, note this line is a comment
importLocation=C:/Backup/CR.l cmbiar
action=promote
LCM_CMS=10.193.6.45:6400
LCM_userName=qa01
LCM_password=password
LCM_authentication=secSAPR3
LCM_systemID=R37
LCM_clientID=800
Destination_CMS=10.193.6.30:6400
Destination_userName=qa01
Destination_password=password
Destination_authentication=secSAPR3
Destination_systemID=R39
Destination_clientID=800
```

Export:

```
#this file exports an existing report
exportLocation=C:/Backup/NewBIAR.l cmbiar
JOB_CUID=AVknMLl2Hn5JspDAGnYPr8Y
action=export
LCM_CMS=10.193.6.48:6400
LCM_userName=administrator
LCM_password=password
LCM_authentication=secEnterprise
Source_userName=Administrator
Source_password=
Source_CMS=testcms:6400
Source_authentication=secEnterprise
```

Agenda



1. Basic Concepts
2. What's new LCM?
3. Overrides
4. Visual Difference
5. Command Line Tool
- 6. CTS+ integration**
7. LCM Services
8. LCM logs
9. What's even newer?

SAP NetWeaver

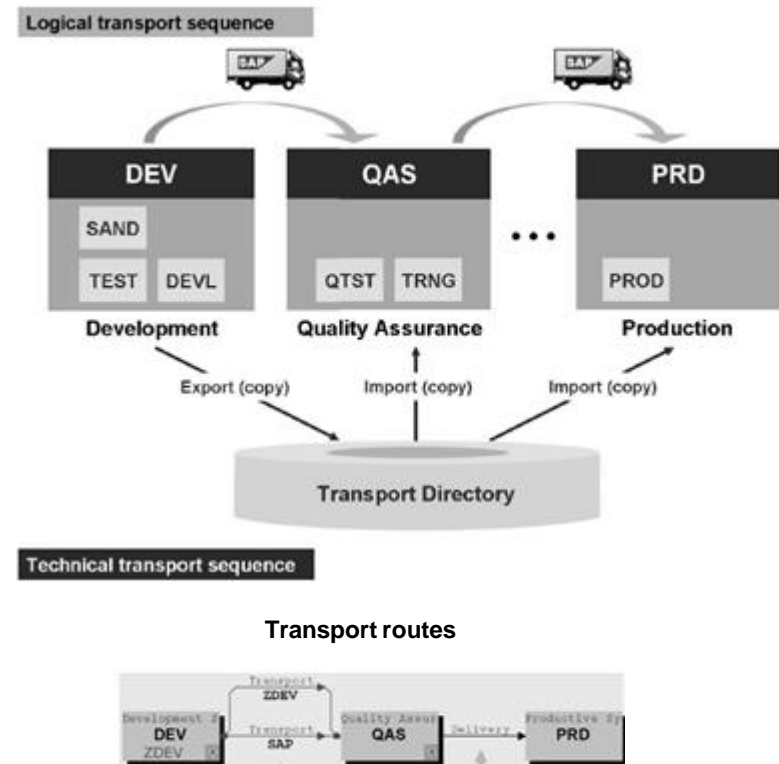
Change and Transport
System (CTS)

Embedded

Business Objects

Lifecycle Management
(LCM)

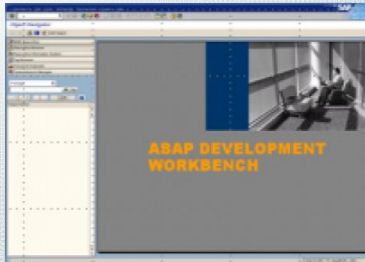
- CTS: Change and Transport System
 - To synchronize content in SAP ABAP deployments
- CTS+: Enhanced Change and Transport System
 - To transport non-ABAP objects
- TMS: Transport and Management System
 - Transaction STMS
 - To define transport domains and transport routes
 - To transport all changed objects from one system to another
 - Transport organizer



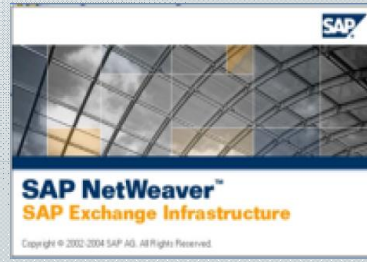
Solution: One Common Transport Tool For Multiple Development Types



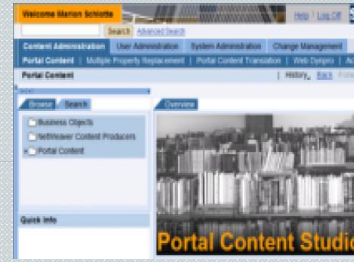
Multiple Development Workbenches



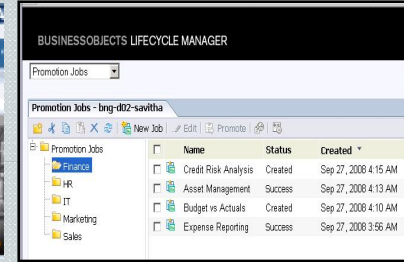
ABAP Workbench



XI Workbench



Portal Content Studio



Lifecycle Management Console



Multiple Backend System Types

SAP Netweaver AS ABAP

ESR/XI/PI
on SAP Netweaver Dual Stack

Portal System
on SAP Netweaver AS Java

SAP BusinessObjects Enterprise



One central transport tool

CTS+
(Enhanced Change & Transport System)

Promotion with CTS+

LCM – Step 1 - Log onto Lifecycle management console using SAP Authentication

LCM – Step 2 – Create a promotion job. For destination select Promote via CTS+

LCM – Step 3 - Add Objects to the Job

LCM – Step 4 – Manage Dependencies (external BW dependencies can be managed)

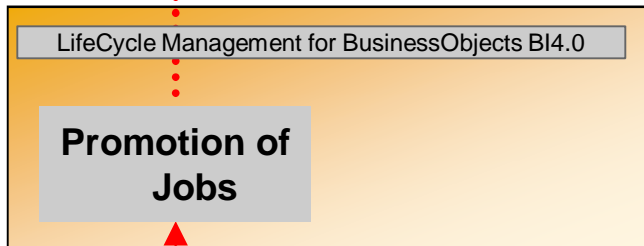
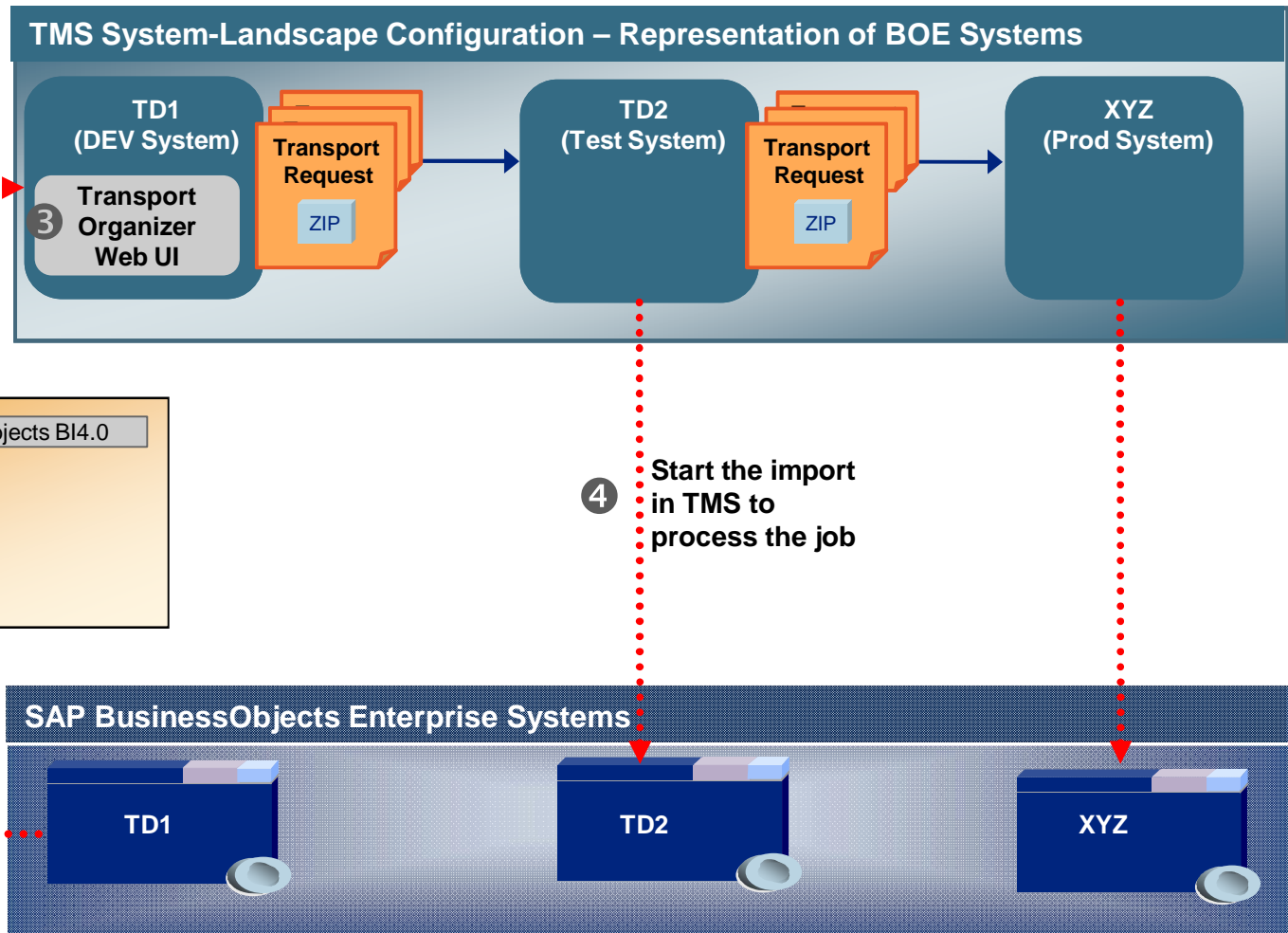
LCM – Step 5 – Promote: transport request is created (Test Promote neither Scheduling job are possible with CTS+)

LCM – Step 6 – Transport Organizer (to change/create transport request if needed)

LCM – Step 7 – Transport request is released

TMS – Step 8 – In SAP system run transaction STMS to see destination import queue and import the request.

Transporting BI content with the help of LifeCycle management Console and CTS+



Agenda



1. Basic Concepts
2. What's new LCM?
3. Overrides
4. Visual Difference
5. Command Line Tool
6. CTS+ integration
- 7. LCM Services**
8. LCM logs
9. What's even newer?

Lifecycle management Services are contained in the Adaptive Processing Server and Adaptive Job Server.

Services in Adaptive Job Server:

- LifeCycleManagement Scheduling Service
 - Scheduling promotion jobs
 - Scheduling promotion overrides
 - Origin scan
- Visual Difference scheduling service
 - Scheduling visual difference

Services in Adaptive Processing Server:

- LifeCycleManagement ClearCase service
 - VMS : ClearCase
 - VMS: Subversion (distributed deployment)
- LifeCycleManagement Service
 - VMS
 - Origin scan
 - To apply overrides on destination system
- Visual Difference Service
 - All Visual Difference operations

Other SAP BusinessObjects BI 4.0 services required for LCM



- Central Management Server:
 - Scanning repositories
 - Promoting jobs
 - Lifecycle management jobs are in CMS database
- Input File Repository Server:
 - Lifecycle management jobs are also stored in the input FRS
- Output File Repository Server:
 - Scheduled instances of Lifecycle management jobs are stored in output FRS
- Report Application Server :
 - To override connections of Crystal Reports 2011
- Connection Server:
 - For connection overrides

Agenda

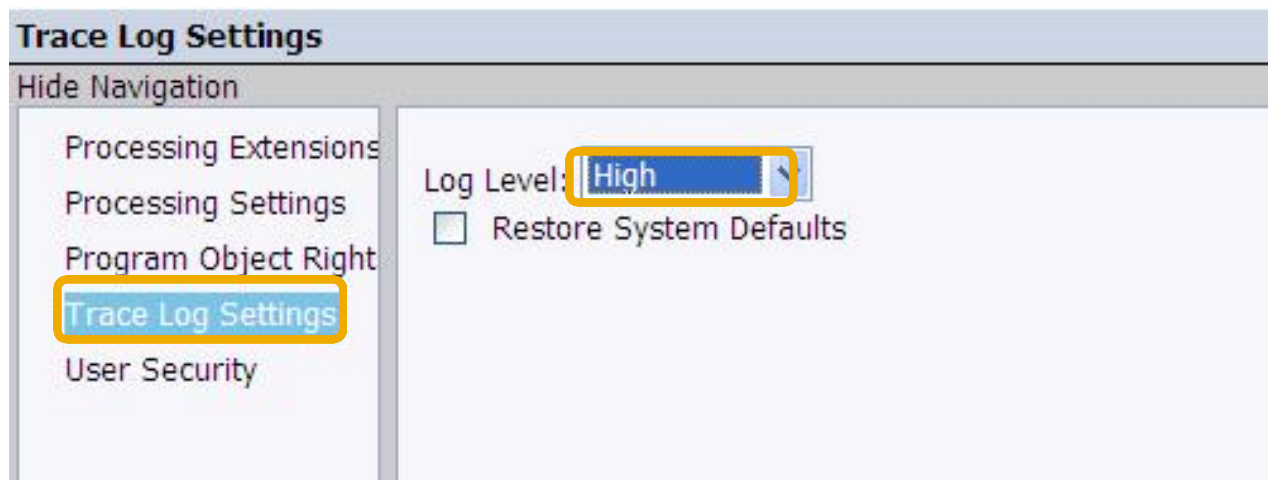


1. Basic Concepts
2. What's new LCM?
3. Overrides
4. Visual Difference
5. Command Line tool
6. CTS+ integration
7. LCM Services
- 8. LCM logs**
9. What's even newer?

Enabling Traces – Web Tier logs



- Go to **CMC > Applications** and right-click the LifeCycle Management. Then click **Trace Log Settings**. Set the **Log Level** to **High**.

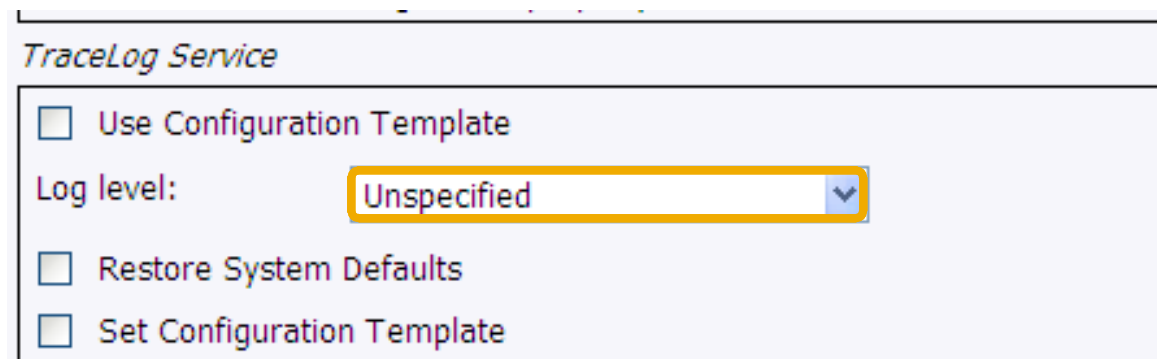


- Restart Web application server. Logs will be in the default BusinessObjects BI 4.0 logging directory.

Enabling Traces LCM Services



- Go to **CMC > Servers** and in the Properties for the **Adaptive Job Server** and **Adaptive Processing Server** set the **Log Levels** to **High**.



- In the **CCM**, restart the **Adaptive Job Server** and **Adaptive Processing Server**. Logs will be generated in default logging folder.
 - \SAP Business Objects\SAP BusinessObjects Enterprise XI 4.0\logging\
*.AdaptiveProcessingServer_trace.0xxxx.glf
 - \SAP Business Objects\SAP BusinessObjects Enterprise XI 4.0\logging\
*.AdaptiveJobServer_LCMSchedulingService_CHILD0_trace.0xxxxx.glf

Agenda



1. Basic Concepts
2. What's new LCM?
3. Overrides
4. Visual Difference
5. Command Line tool
6. CTS+ integration
7. LCM Services
8. LCM logs
- 9. What's even newer?**

Thank you!



No part of this publication may be reproduced or transmitted in any form or for any purpose without the express permission of SAP AG. The information contained herein may be changed without prior notice.

Some software products marketed by SAP AG and its distributors contain proprietary software components of other software vendors.

Microsoft, Windows, Excel, Outlook, and PowerPoint are registered trademarks of Microsoft Corporation.

IBM, DB2, DB2 Universal Database, System i, System i5, System p, System p5, System x, System z, System z10, System z9, z10, z9, iSeries, pSeries, xSeries, zSeries, eServer, z/VM, z/OS, i5/OS, S/390, OS/390, OS/400, AS/400, S/390 Parallel Enterprise Server, PowerVM, Power Architecture, POWER6+, POWER6, POWER5+, POWER5, POWER, OpenPower, PowerPC, BatchPipes, BladeCenter, System Storage, GPFS, HACMP, RETAIN, DB2 Connect, RACF, Redbooks, OS/2, Parallel Sysplex, MVS/ESA, AIX, Intelligent Miner, WebSphere, Netfinity, Tivoli and Informix are trademarks or registered trademarks of IBM Corporation.

Linux is the registered trademark of Linus Torvalds in the U.S. and other countries.

Adobe, the Adobe logo, Acrobat, PostScript, and Reader are either trademarks or registered trademarks of Adobe Systems Incorporated in the United States and/or other countries.

Oracle is a registered trademark of Oracle Corporation.

UNIX, X/Open, OSF/1, and Motif are registered trademarks of the Open Group.

Citrix, ICA, Program Neighborhood, MetaFrame, WinFrame, VideoFrame, and MultiWin are trademarks or registered trademarks of Citrix Systems, Inc.

HTML, XML, XHTML and W3C are trademarks or registered trademarks of W3C®, World Wide Web Consortium, Massachusetts Institute of Technology.

Java is a registered trademark of Sun Microsystems, Inc.

JavaScript is a registered trademark of Sun Microsystems, Inc., used under license for technology invented and implemented by Netscape.

SAP, R/3, SAP NetWeaver, Duet, PartnerEdge, ByDesign, SAP Business ByDesign, and other SAP products and services mentioned herein as well as their respective logos are trademarks or registered trademarks of SAP AG in Germany and other countries.

Business Objects and the Business Objects logo, BusinessObjects, Crystal Reports, Crystal Decisions, Web Intelligence, Xcelsius, and other Business Objects products and services mentioned herein as well as their respective logos are trademarks or registered trademarks of Business Objects S.A. in the United States and in other countries. Business Objects is an SAP company.

All other product and service names mentioned are the trademarks of their respective companies. Data contained in this document serves informational purposes only. National product specifications may vary.

These materials are subject to change without notice. These materials are provided by SAP AG and its affiliated companies ("SAP Group") for informational purposes only, without representation or warranty of any kind, and SAP Group shall not be liable for errors or omissions with respect to the materials. The only warranties for SAP Group products and services are those that are set forth in the express warranty statements accompanying such products and services, if any. Nothing herein should be construed as constituting an additional warrant.